



PAC GEO

For info, please contact:
Pacific Geomatics Limited
T. 604-372-3300
E. sales@pacgeo.com

Bring your terrain data to life with 3D Mesh

Add relief and photorealism to your imagery and visualise the world in 3D.

Visualise your area of interest, even in remote and hotspot areas using regularly updated, fresh and relevant data.

Simulate your tactical mission, network utilisation or natural event with consistency and homogeneity around the globe.

Model your construction project, geological point of interest or city map, to support risk assessment, and informed decision-making.

Based on Pléiades Neo, 3D Mesh offers very high-resolution as fine as 0.5m enabling better analysis, decision making, planning and training, improving situational awareness. They unlock potential in new areas such as entertainment applications with gaming, VR and more.



Improve the level of detail even further with HD15 processing option!

Airbus 3D World

Reaching new heights with our versatile multidimensional layers



Highly accurate geolocation
(supported by Ground Control Points and precise reference layers)



Rapid on-demand delivery



Tailored to needs, with flexible min. AOI size



Off-the-shelf affordable DEM



Globally available



Versatility across industries, wide-ranging applications



High level of details and realistic 3D models



Stereo imaging excellence (optical and radar)



Discover our Elevation Portal!
Also accessible from our OneAtlas platform,
<https://elevation.oneatlas.airbus.com>

Contact us



Airbus Defence and Space
Australia, Brazil, China, Finland, France, Germany, Hungary, Singapore, Spain, United Kingdom, United States

This document is not contractual. Subject to change without notice.
© Airbus DS 2026
All rights reserved.

AIRBUS

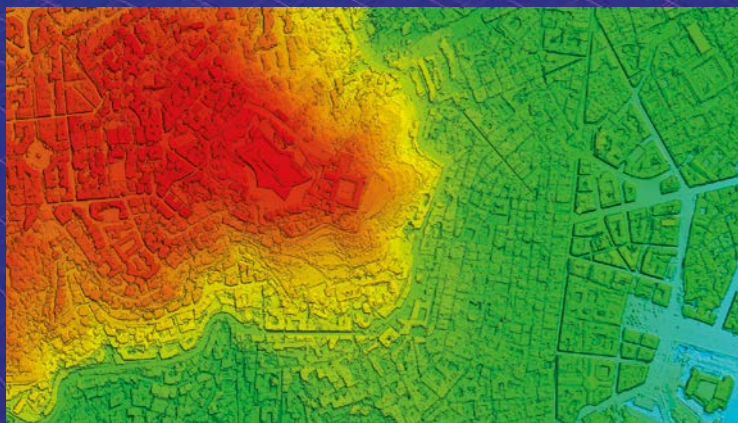
AIRBUS

Enhancing your data with our highly precise range of 3D Geospatial Information

Airbus is your key 3D partner, offering on-demand and off-the-shelf digital elevation models and textured 3D models with the most comprehensive range of resolutions at global scale.

We provide highly accurate information anywhere on Earth. Versatile and flexible, our products meet the needs of many industries, including Defence (intelligence and mission planning), global and urban mapping, exploration and prospection, location-based services, aviation, infrastructure and civil engineering, smart cities... They even serve as foundations for tailored Digital Twins, accurately and realistically replicating our world.

Our elevation models are available as both DSM and DTM, for valuable information and immediate insights.

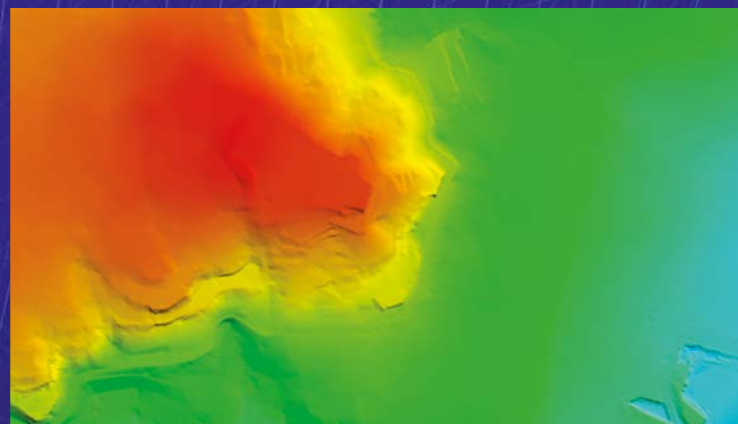


Digital Surface Model (DSM)

Capturing the world as it truly exists, DSMs enable accurate height measurement. They provide immediate real-world context and are essential for all projects and missions requiring precise understanding of the terrain and environment.

Digital Terrain Model (DTM)

Remove man-made objects and vegetation to reveal the real nature of the landscape. DTMs are essential in hydrology modeling, earthwork calculations and enabling infrastructure development. We provide DTM with various grid spacing to offer you the balance and quality you need.

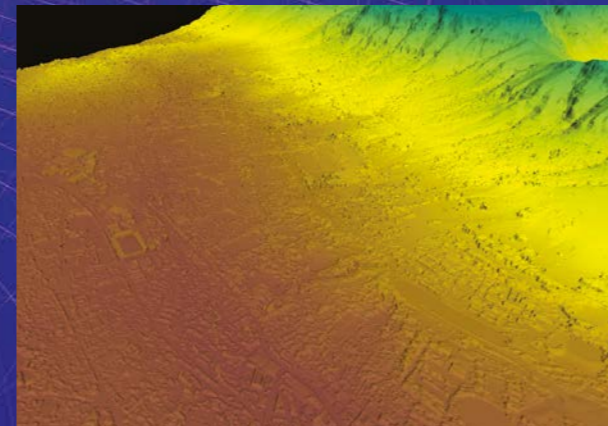


AIRBUS 3D WORLD DEM 5

DEM 5 is one of the most accurate global satellite-based Digital Elevation Models available, based on radar interferometry and locally upgraded with even more accurate Airbus sensor data. With unique data quality and level of detail, it facilitates a wide range of applications such as line-of-sight analysis, hydrological modelling, satellite imagery orthorectification, 3D mission planning and more. Available worldwide off-the-shelf, it is the most consistent layer model for risk assessments and management, and investigating global phenomena.



- 5m Resolution
- Off-the-shelf availability
- Up to 2m Rel. vertical accuracy
- 1.5m Abs. vertical accuracy (DSM)
- GLOBAL coverage



Based on Pléiades stereo and tri-stereo optical satellite data, DEM 1 delivers Digital Elevation Models with highly precise altimetric information, providing the ideal elevation data for infrastructure and engineering projects.

DEM 1 is applicable on any kind of relief – especially in urban areas, and is designed to deliver the best balance of detail and value.

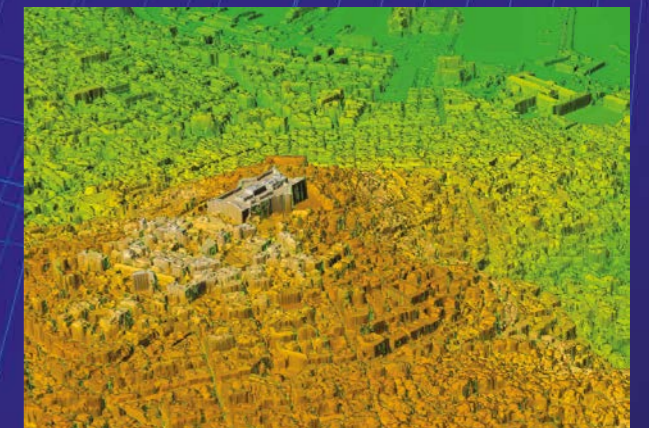
Optional ortho-mosaics with 50cm resolution are available.

- 1m Resolution
- Up-to-date data acquisitions
- 1.5m Abs. vertical accuracy

This next level high-resolution elevation model offers 50cm resolution based on Pléiades Neo tri-stereo imagery.

This outstanding resolution and accuracy supports new use cases, like digital twin visualisation to simulate smart city concepts or replacing the need for drone or aerial data in the mining industry.

- 0.5m Resolution
- Up-to-date data acquisitions
- Based on Pléiades NE
- Down to 1m Abs. vertical accuracy



On-DEMAND

Our On-DEMAND option offers customers the flexibility they need for their projects. Order custom 3D products that fit your grid spacing, data format, specific editing rules needs.